

Substyles of
Baroque
Design



Baroque.com

Baroque Design can be broken down into several substyles that can be applicable to specific industries. Derived from the general characteristics of Baroque Design, these substyles employ more specific characteristics of their own. Let's delve into the deeper aspects and aesthetics of Baroque Design styles. We'll cover four specific substyles:

- Gothic Grotesque
- Organic Nature
- Victorian Vintage
- Mannerist Avant-Garde

These substyles can be applied to both web and print design projects, allowing for flexibility in scope and purpose.



Gothic Grotesque



The Gothic Grotesque substyle is inspired by gothic architecture and artwork. It moves toward naturalism and emotional expression in terms of visual aesthetics.

Characteristics include:

- Decorative gothic and ornate fonts
- Strong, distinct shadows
- Grotesque imagery & visuals
- Sharp accents & shapes
- Delicate, complex tracery & patterns
- Distinctive light & dark contrasts

This style is both grand and grotesque all at once. It fuses both light and dark elements, while simultaneously preserving beauty and elegance.

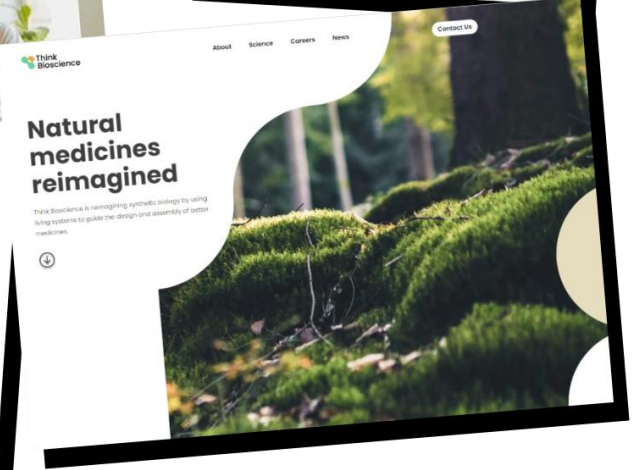


Organic Nature

The Organic Nature design style brings harmony between nature and content design. Characteristics include:

- Irregular, imperfect & morphing shapes
- Virescent and natural color tones
- Vine & floral filigree accentuation
- Earthy visuals & imagery
- Cursive, script, or other decorative fonts & typography
- Naturally flowing content with smooth motions

This style blends natural elements with minimalist aesthetics, creating a serene sense of pleasure that conveys an organic flow of concepts and a spiritual connection with nature.

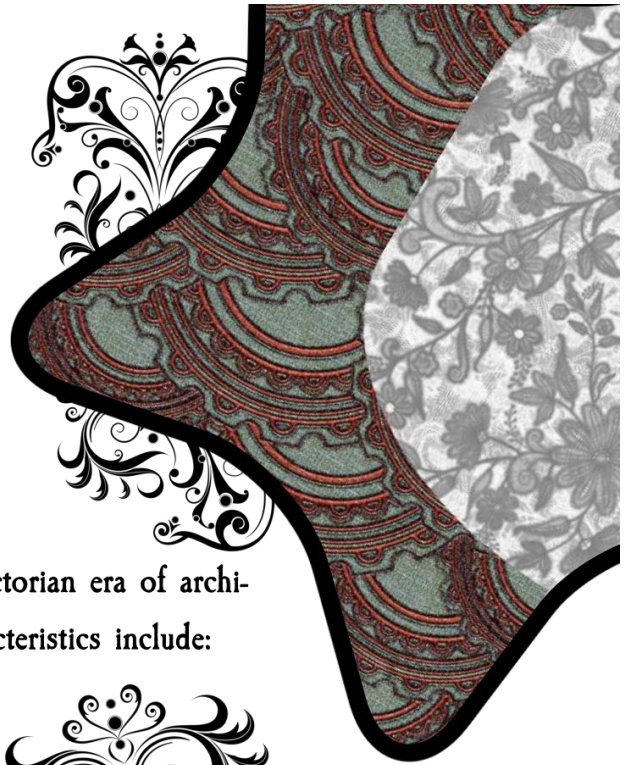


Victorian Vintage

The Victorian Vintage style draws inspiration from the Victorian era of architecture and combines it with retro design elements. Characteristics include:

- Lace & delicate accents
- Rustic color schemes
- Intricate patterns & textures
- Generous whitespace
- Asymmetrical balance
- Decorative retro & vintage fonts

This style harkens to a royally antiquated vibe of visual elegance and sophistication. Combine the old-fashioned with retro nostalgia, and create a classical & victorious visual appeal.

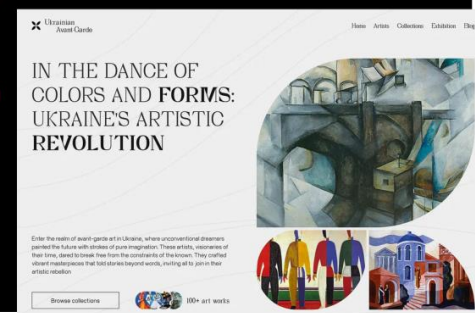
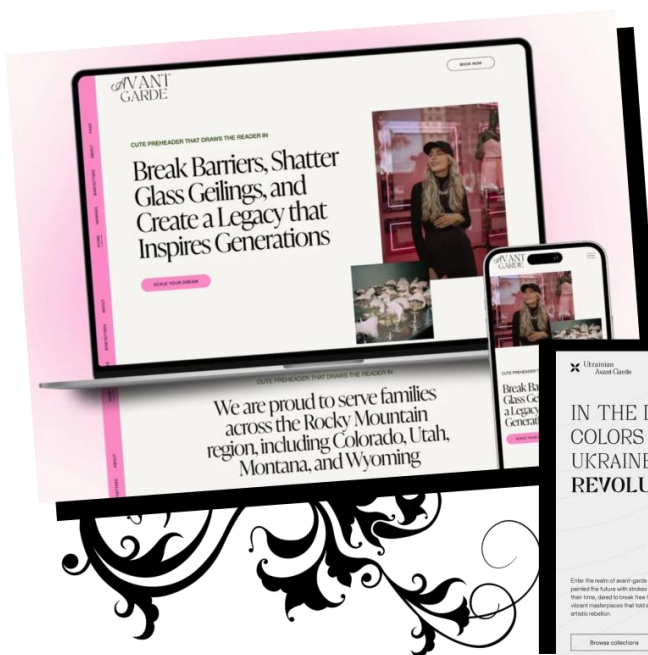


Mannerist Avant-Garde

The Mannerist Avant-Garde style is an experimental design approach with complex and exaggerated compositions. Characteristics include:

- Distorted & contorted figures
- Strange & experimental color schemes
- Surreal or bizarre imagery
- Irrational spacing & layouts
- Bold geometric design or visuals
- Artistic & decorative fonts

This style is strongly expressive and pushes the boundaries of traditional artistic skill by conveying emotional sophistication. This is accomplished by pioneering radical or sometimes controversial undertones.



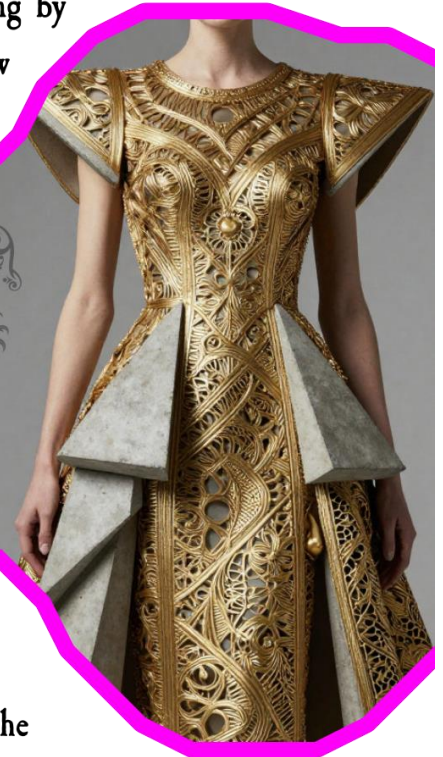
MIX & MATCH: Create Your Own Style



Expanding on the Mannerist Avant-Garde substyle, consider experimenting by combining any of the Baroque styles with any other design style. A few examples may include:

- Baroque + Brutalism
- Gothic Grotesque + Minimalism
- Victorian Vintage + Maximalism
- Baroque + Material Design
- Mannerist Avant-Garde + 90s Retro
- Organic Nature + Brutalism + Material Design

There is no limit to inventing your own custom substyles of Baroque Design, as long as the basic Baroque Design characteristics, guidelines, and principles are utilized or incorporated into the design (discussed in the "Intro to Baroque Design" ebook).



The End